



Summer 2023

Pearl Group Staff Pension Scheme

PENSION news

Welcome to the summer 2023 edition of *Pension news*

I sincerely hope you all had a wonderful Christmas making memories. As usual, it's been a real treat going through your news and photos from the various events that have taken place, so please keep them coming.

I'm very grateful that our summer edition of *Pension news* has been contributed to by a wide variety of members sharing their news with us. This issue features musical memories from the multi-talented Keith Quick, some Pearl history courtesy of Ian Bentlett and plenty of exciting group updates.

You'll also find information on upcoming events, as well as contact details for groups near you.

Best wishes,
Wendy Ludman
Editor



INSIDE:

Striking a chord
04

Pearl history: CODO
06

PCOPA update
08

Your group updates
09

DWP State pension errors
14

Pension Credit
14

Scam awareness
15

In remembrance
16

Obituaries
19

Get in touch
24

Have you recently retired?

Many congratulations to the 145 members of the Pearl Group Staff Pension Scheme who have retired recently. Best wishes for a wonderful retirement!

Welcome to your first issue of *Pension news*. If you'd like to catch up with former colleagues who have already retired, why not get in touch with your local retirees' club? You can find all the contact details on pages 22 to 23.



Any news for Pension news?

We're always keen to hear from our members about their life in retirement. If you're celebrating a special birthday or anniversary, or you've discovered a new hobby or interest, why not send us a photo so we can feature it in this newsletter?

Email: pearl@firstactuarial.co.uk

The deadline for the Winter issue of *Pension news* is Friday, 6 October.



Striking a chord: from cassette tapes to SoundCloud

By Keith Quick

I joined the Pearl in 1974 as an agent at the Fareham (Hants) office. Office closures meant that I moved to the Portsmouth office until that, too, closed and I ended up in the Waterlooville office. I worked there until I left the Pearl, or AMP as it had become, in about 1998.

From the late 70s up until the millennium, my passion was songwriting. There must be some former colleagues out there who remember me, including some of the sales specialists who, I'm sure, still cringe at the memory of having a cassette foisted on them on a Friday night. What followed each Monday morning was an awkward conversation where their skills at being tactful – and my ability to handle rejection – were put to the test.

The last thing I'd always say when handing over a tape was, 'I don't profess to be able to sing. I just make these

demos to give an idea of the song. Try and judge the song, not the singing'. More often than not, I'd get a smirkingly delivered remark about the poor singing, although I got better reviews about the lyrics. I'd always hoped that someone in the music industry might see past my limitations and see some potential, but they never did.

I never tried to write for a particular market or imitate anyone else's style, I just sat at the piano and wrote what came out. My view was that at least they were my original songs and if nobody wanted to run with them, so be it. As a direct consequence of that strategy, they were relegated to a box in the cupboard under the stairs at the turn of the millennium, when I had decided to give it up as a bad job!

Since retiring in 2008, I have spent many hours researching my family tree. Sadly, I'm not related to

anyone famous despite going back to the 1600s, which should cover most general enquiries! Ever a keen writer, my only claim to any sort of fame since retirement was winning the *Portsmouth News*' Christmas ghost story competition in 2014, with a story about a soldier in WW1 to mark the centenary of the start of that event.

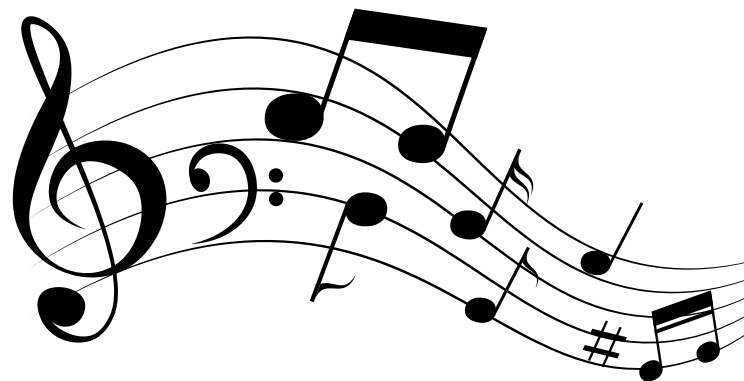
A few years ago, whilst rummaging about in the darkness for something or other, I unearthed my 'life's work' of around 125 songs. I played some and thought they deserved better than their present fate (I'll concede that there may be the outside chance that I'm a little biased in that opinion). Following this discovery, I decided to digitise the songs and cast a few out into the world. A small selection can be found by searching for *KeithRQuick* on SoundCloud. Leave out the 'R', and you'll get someone else (who you might prefer!).

My songs were never aimed at teenagers, but they may appeal to a more mature audience – a prime example being a Pearl pensioner. They were mainly written as little dramas aimed at eliciting an emotion, to laugh or cry or both. They're not 'earworms' that'll annoyingly get inside your head that you'll go around singing all day, so some good news there. Some of the subject matter may not appeal to everyone, but some reflect life's realities – and life's not always jolly.

Having never heard any of the songs written for a female vocal actually sung by a female singer, I did get two songs recorded by a demo company (*The moon belongs to me, and Today was when*). They're recorded at a louder volume than my versions, so I bear no responsibility for any burst eardrums or blown hearing aids!

You can listen to Keith's digitised tunes by visiting:

<https://soundcloud.com/user-846814175>



Pearl history: the CODO project By Ian Bentlett

Back in 1987, a team of us started work on one of Pearl's most ambitious computer projects – CODO. The idea was to implement a full-scale computerisation of Pearl, and I wondered if there were any *Pension news* readers out there who may remember it?

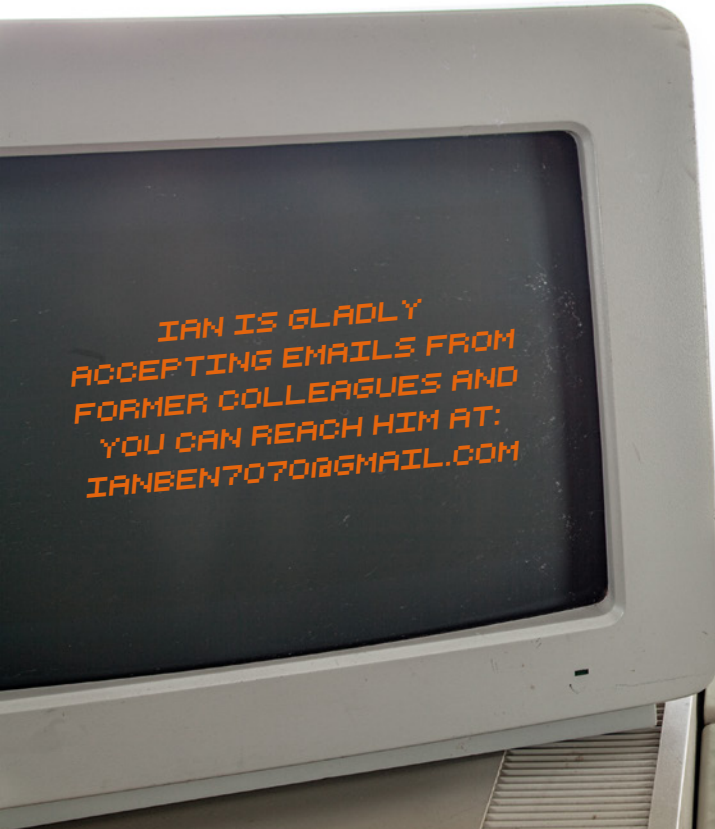
It was recommended to Pearl that an 'end user' project manage the computerisation, given the fact that developers often don't fully understand the needs of the people using the systems. Pearl agreed, and somehow I was offered the job! It was a position that led me to be involved in some of the most all-encompassing, stressful and unusual work I've ever undertaken, but it was an entirely satisfying role where I worked with a team of fantastic people from both the field and the chief office.

Over the months our team got down to business. We had a model district office set up in Peterborough to test systems before installation, then began to move forward at pace. We installed one of the first Wide Area Networks (WAN) in Pearl history – a system implemented to allow remote offices to communicate with the head office mainframe. It was initially on a limited basis but would roll out to all offices in the UK once it was proven worthwhile.

One of the major tasks we faced was training the field office staff. The training involved four specialist trainers who worked with up to 48 office staff each week. I will forever remember our outstanding project secretary, always the smiling face who looked after the trainees!

I'm sure there were several doubters out there, especially as we were told in our first CODO meeting that 65% of projects like ours fail, but despite the odds we successfully completed the project on time and within budget at the end of 1990. It wasn't always easy, and often we were presented with some very difficult challenges, but thanks to the hard work and perseverance of everyone involved in the project, the benefit in the end far outweighed any challenges we faced.

Come the end of the project we had several rather lively parties, especially one at the Belfry where all team



IAN IS GLADLY
ACCEPTING EMAILS FROM
FORMER COLLEAGUES AND
YOU CAN REACH HIM AT:
IANBEN7070@GMAIL.COM

members came along. It was great fun and went on late into the night, and for some into the early morning!

Fortunately, I still keep in touch with some of the team, though not as much as I'd like. I now live just outside of Totnes in Devon and have so many great memories of my time working for Pearl.

Some of my colleagues are sadly no longer with us, but I would love to hear from anyone who was on the CODO team who I may have lost touch with.

Pearl Chief Office Pensioners' Association

Update on association office holders and future plans

Over the last few months our activities have been curtailed due to the serious ill health of two of our office holders.

Jim Rowden, our treasurer, remains in care and is currently unable to carry out his normal tasks. Our chairman, Ken McAleer, has been seriously ill in hospital since the end of November but I am pleased to report that he is now recovering (though he remains in hospital). As a result, our annual lunch scheduled for May 2023 was cancelled and a new date is being arranged for October.

Many members have sent good wishes to both Jim and Ken and hopefully we'll have positive news to report in the next issue of *Pension news*.

As the Association grows older so does the age profile of our membership. This means that, unfortunately, the majority of our members are no longer able to attend our annual meetings for a variety of reasons. We're currently updating our communications so that we can remain in contact with as many as possible through digital means, although we'll continue to post a newsletter twice a year.

A tentative date of Tuesday 10 October has been fixed for our next get-together when members will be invited to join our lunch at The George Inn at Southwark, which proved very popular last year.

Roger Jeary
Hon Secretary
PCOPA



M & CC Group

We're pleased to report that the group held their Christmas luncheon over the festive period, which was enjoyed by all and made all the merrier by having 20 people in attendance.

The Group regularly holds various events and is always welcoming new faces. If anyone is interested in future events and has not attended before, please contact Brian Mann. His details can be found in the group contacts and events section on page 22.



London Life

The annual pensioner reunion lunch took place on 22 May and was held at the Holland House Hotel, which was Phoenix's old building in Bristol.

Regular meet-ups are also held at the Ostrich in Bristol and all are welcome. If you'd like to come along, please contact Chris Essex. His details can be found in the group contacts and events section on page 23.



Pearl Pensioners' Club: Peterborough

WALKERS

The walking section continues to flourish, with Mike Field and Terry Moon regularly leading groups of 15 plus through the countryside surrounding the many pretty stone villages nearby. Recent highlights include the beautiful Waternewton Lock (pictured) and our impromptu visit to the beautiful house owned by Strictly's Craig Revel Horwood. It's lucky he wasn't in – he may have objected to a crowd of pensioners nosily pressing their faces between the rails of his wrought iron gate to catch a glimpse of his outdoor swimming pool!

During our walk from Warmington, we came across the lovely Rectory Farm Café, where the atmosphere was absolutely buzzing with chattering ladies eating full English breakfasts, homemade cakes and quiche Lorraine. We later discovered that this excellent establishment is run by Sally, daughter of our sadly departed pensioner, Peter Battams (you can read his obituary on page 17).

For the first time ever, our December walk included a superb Christmas lunch at Milton Golf Club. After a bracing stroll, we made our way to the clubhouse,

where wine was soon flowing, and the sound of crackers and party poppers filled the air. As club events go, this one was certainly a delight to attend, providing a pleasurable diversion from the stress and worry of the Christmas preparations.

Future walks are generally on the last Wednesday of the month – full details can be found in the group's monthly newsletter.



XMAS PARTY

Our massively popular Christmas party took place in December (unsurprisingly) and included a free raffle for a bumper crop of prizes. Pauline McDermott and Joy Wilson did us proud with a superb buffet, and Terry Moon launched his annual quiz. Quiz teams were challenged to guess the identity of photographs placed strategically around the walls, and then answer a related question.

First prize went to the crack team of Geoff and Hilary Delany, with Don Gardener and Roger Law coming in a close second. The walls were adorned with photographs of previous events – images of the days when large numbers of our members enjoyed trips to various parts of the country, each wittily captioned by Terry.



MUSIC SOCIETY

The music society has enjoyed a number of excellent presentations in recent months, including an audio-visual feast based on space, as well as Geoff Delany giving us his version of Desert Island Discs.

The English Connection by Jan West and Carole Moon is scheduled for 28 April, with the annual dinner at Milton Golf Club following on 19 May. Both of which will have taken place when this edition of *Pension news* is received, so hopefully you'll read all about it in the next one!

RULES FOR LIVING

On 7 December, around 25 of our members made the annual trek to Stamford Arts Centre to see the comedy *Rules for Living*, which depicted a family gathering for Christmas lunch. As everybody arrives, all seems jolly enough, but soon barely suppressed tensions begin to surface.

Although some laughs were to be had, there was a significant mismatch between the expectations of some of the audience and what was presented, with some bad language and upsetting scenes. All in all, there was a mixed reaction from our group, and I for one hope nobody had to endure scenes like these during their own festivities!

SNOOKER

The snooker section continues to meet every Monday at the Court, Bretton. Recently, two new members have joined us which means we can again confidently book three tables each week.

In December, the section enjoyed a Christmas lunch, paid for thanks to Brian Bates's shrewd management of the weekly fees. It's always one of the highlights of the year, with good food, excellent company and plenty of wine and beer – what could be better?

Geoff Delany gave one of his notorious speeches before presenting Dave West with the 'Biggest Break Trophy' for his mind-boggling score of 24. The day was rounded off with yet another of Terry Moon's excellent quizzes. Afterwards, festivities continued in the bar until the arrival of the X4 bus to Oundle; at which point, a mass exodus called halt to a wonderful afternoon.



Forthcoming events

NENE VALLEY RAILWAY – Sat 17 June

A trip on this local heritage railway is currently being planned in June, setting off at 7pm. Once in our reserved seats, we'll be served a fish and chip meal as we chug our way through Nene Valley and are transported back to days gone by.

NEWMARKET RACES – Thurs 29 June

Tickets to 'the home of horseracing' are currently on sale, giving us access to unreserved seating in the Grandstand, Paddock, Parade Ring and Winners' Enclosure, not to mention the various bars and food facilities around the course. Parking is free, and the gates open at 10:55am, with the first race at 1.25pm. There are seven races altogether, with the last at 4.55pm. Although food is available inside, many people take a picnic which can be eaten on the grass car park before going in.

TRIP TO ELY – Weds 19 July

With rail or self-drive options available, we plan to meet up in Poet's House for coffee before setting off on a costumed guided tour of Oliver Cromwell's house. Free time for lunch/sightseeing will be followed by a guided tour of the historic cathedral. The day will round off with an optional boat trip along the delightful waterfront. Other attractions for those arriving early, or staying on afterwards, include Ely Museum, the Stained Glass Museum, Waterside Antiques (largest centre in East Anglia), Peacocks Tea Rooms, an art centre, shops and a lovely riverside walk.

VINE HOUSE FARM – Weds 2 August

Situated between Market Deeping and Spalding, this large farm hosts tractor-drawn tours around its many acres. The host, Nicholas, explained: 'The tour around my organic farm shows visitors what we grow, how we grow it and what I do for wildlife. We're really into renewable energy and all of that is demonstrated – wind, solar, biomass, using waste oil for heating and waste heat from refrigerators. Our bird seed factory can also be visited, and we'll explain how everything works'. Afterwards, tables will be available in the farm café, which offers a wide range of homemade dishes.

TOLETHORPE – Weds 9 August

Tickets are now on sale for our regular summer visit to the outdoor theatre for Alan Bennett's *Lady in the Van*. The play tells the (mostly) true story of Bennett's interactions with Mary Shepherd, an elderly woman who lived in a dilapidated van on his driveway in London for 15 years. Book via Geoff Lidbetter.

Monthly club meetings are held on the second Thursday of each month at Colonel Dane Memorial Hall, Church Street, Alwalton, Peterborough PE7 3UU

We also send a monthly newsletter (posted free to all members) that provides further information on all club activities, including Terry Moon's 'Mindbender' quiz, birthday and anniversary announcements, plus a variety of jokes and cartoons.

Pension news

DWP State pension errors – are you owed money?

The Department for Work and Pensions (DWP) has revealed that thousands of people could be owed up to £10,000 in back payments. The mistake has been put down to complex systems and IT rules.

It is estimated that around 237,000 older people have been underpaid, amounting to £1.46 billion. The issue has predominantly affected women who reached the State pension age before April 2016, particularly married women or widows. The DWP has said it started trying to find the people affected by this in January 2021, with an aim of completing the project by the end of 2024.

Anyone who is owed money due to this error will be contacted by the DWP, likely by letter, however if you believe you're owed pension back payments, you should contact the Pension Service, rather than the DWP, as they will be able to check for you.

You can call the Pension Service on 0800 731 0469 or find their full contact details on the **GOV.uk** website.

Pension Credit amidst the cost-of-living crisis

Pensioners are being urged to check their entitlement to Pension Credit, as the DWP warns people could be missing out on up to £201 each week.

Pension Credit is a tax-free payment for those who have reached the State pension age and live in the UK. You can apply any time, but payments can only be backdated by three months. To apply, you'll need your National Insurance number, plus information about any income, savings and investments you may be in receipt of.

The DWP said: 'An award of Pension Credit can provide access to a range of other benefits such as help with housing costs, council tax, heating bills and for those aged 75 or over, a free TV licence'.



Telephone scams: remain vigilant

Many scammers use phone scams as a way in with their victims, and it can be hard to tell the difference between a scam and a cold call. However, there are some typical tricks that scammers use that might help you to feel more prepared.



Bank scams

Someone may call claiming to be from your bank, telling you there is a problem. They may ask for your account details, even offering to send a courier to collect your card. This is a common scam, and your bank would never ask you to do this.

Compensation calls

Some compensation calls are from genuine companies looking for business, but others are scammers. Don't engage in these calls. If you've had an accident, call your insurance company directly to start a claim.

HMRC scams

You may receive calls from someone claiming to be from HMRC, often saying there is a problem or an unpaid bill. Be aware that HMRC would never contact you this way and would never ask you to reveal any personal information over the phone.



If you think you're on the receiving end of a suspicious call, don't feel rushed and don't be afraid to hang up the phone.

In memory of Norma (Ruth Tindall) by Les Whitlam

Ruth Tindall joined Pearl straight from school as a junior clerk in T1. After some time working 'upstairs', doing typing and other tasks for the Divisional staff for one day each week, Ruth's manager made the move to 'upstairs' permanent. After some 18 months learning how the division worked, she became senior clerk in the T Division office at the age of 20. Ruth spent the next 26 years there before leaving Pearl in 1997, when the T Division was closed down.

Unfortunately, since her retirement, Ruth became unwell and spent a long time in hospital. She was eventually able to come home, where she sadly passed away some three weeks later on 5 October 2022.

Despite some 25 years since leaving Pearl, two of her former managers attended her funeral, along with girls from her office and T1 & T2. Some of those colleagues are still in touch with Ruth's partner of 50 years – Mr Les Whitlam – which is of great comfort, and a testament to how much everyone thought of her.

Les would like to pass on his thanks to all those who visited Ruth in hospital and sent cards, phoned and attended her funeral. She will be greatly missed by all her friends and especially Les.



Remembering Peter Battams

by Colin Leary

Peter sadly passed away on 13 December 2022, at the age of 89, after having been very unwell for some time. His funeral was well attended, with around 20 members of the Peterborough club present.

Peter joined the Ordinary Branch of Pearl and commuted from Surrey. He married Pat in March of 1972 on his 39th birthday. They had two children: Sally and Michael. Peter transferred to the Postal Department and moved to Oundle when the Company relocated to Peterborough.

He had a great passion for all kinds of sports, playing over 350 matches in various elevens of the Pearl Football

Section. He also played cricket, table tennis and took part in athletics, being a 'mean' sprinter.

On retirement, he followed the Oundle cricket team and organised the weekly Club snooker sessions at Woodlands, and other locations, in Peterborough. He also instigated annual trips to the World Snooker Championships at Sheffield.

Peter was a very sociable person, always showing empathy towards his friends and colleagues. He will be greatly missed, and our sympathies go to Pat, Sally, Michael and the wider family.



Rest in peace, Peter Tomkin by Terry Moon

Peter was born on 5 September 1934, and died on the 14 February 2023, at the age of 88.

He met Marian Connaway at the Pearl Cycling Club and, after several long rides, they decided that a tandem suited them best and got married in 1958. They moved south of the river to Catford, and then Bexleyheath. This was not an unproductive time, resulting in two daughters and a son – Judith, Sheila and Philip. He moved to Management Services and worked on the Company's move to Peterborough, getting ready such essentials as transport, furniture and catering, and overseeing the canteen.

Peter was an excellent artist, and walls at his home are covered with his work. He was the founder of the Castor & Ailsworth Society of Art and was its treasurer and mainstay for most of its existence. Peter was committed to the church and was particularly happy when Marian officially became a Catholic. He was parish treasurer for 25 years and any number of priests and friends from the church found reasons – business or social – to visit Ailsworth and experience his culinary skills and hospitality.

Peter and Marian supported just about everything that the Pearl Peterborough Pensioners' Club did, and he rarely missed a day out or week away. In 2013, a spinal problem meant walking was both painful and difficult, but he still took on Clifton Suspension Bridge by wheelchair.

At any given event, Peter's table was the place to be, perhaps because he was Pearl's no.1 joke-teller. Marian has received nearly 90 cards since Peter died, and many of them mention his sense of humour. When Chairman David West welcomed Peter and Marian's reappearance at the October 2022 monthly meeting, there was spontaneous and sustained applause.

I will miss Peter. We will all miss Peter.



Obituaries

We regret to announce the death of the following Pearl Group pensioners.

PEARL					
Name	Address	Age			
Mrs ZM Air	Carlisle	100	Mrs B Cadman	Chester	77
Mrs VM Allaker	Consett	92	Mr W Campbell	Airdrie	78
Mrs JM Allison	Pitlochry	69	Mr J Caputa	London	98
Mr D Andrew	Skegness	79	Miss PGH Carey	Hayling Island	85
Mr EP Atkins	Ware	92	Mr KG Chapman	Stafford	71
Mr RC Axbey	Middlesex	90	Mr BHI Clarke	Newmarket	91
Mrs B Bain	Grampian	92	Mr GH Cleaves	Bury St Edmunds	96
Mrs PM Bain	South Cumbria	97	Mr RB Clements	Surrey	79
Mr NG Barnes	Newcastle upon Tyne	84	Mrs CI Cole	West Sussex	94
Mrs PR Bartlett-Barfoot	Hounslow	93	Mr CP Conway	East Kilbride	75
Mr P Battams	Peterborough	89	Mr J Corker	York	69
Mrs CA Beer	Bristol	84	Mr AJ Croasdale	Birchington	89
Mr BJ Belcher	Redhill	81	Mrs IJ Davies	Preston	91
Mr DJ Benham	Madeira	78	Mr AJ Davis	Didcot	59
Mrs EM Beskine	Hertfordshire	96	Mrs PM Diss	Halstey	90
Mrs A Bishop	Glasgow	85	Mr CT Duffield	Oxford	83
Mr PG Black	Cranbrook	87	Mr BAB Eagle	Surrey	88
Mrs MH Booth	Magherafelt	95	Mrs M Earley	Brighton	90
Mr W Booth	Cheshire	94	Mrs MW Ellemore	Hemel Hempstead	81
Mr JT Brandrick	Ilkeston	87	Mrs SM Elmes	London	86
Mrs DP Bray	Surrey	78	Mrs M Elsley	Surrey	89
Mrs J Bridgeman	Redhill	87	Mr R Evans	Caernarvon	85
Mrs IJ Bunn	Norwich	93	Mrs NI Farish	Workington	101
Mrs A Bunt	Newquay	95	Mrs JM Fayle	Isle Of Man	104
Mrs EG Buxton	Kirkby-in-Ashfield	86	Mr RE Fisher	Co Louth	83
			Mr J Fisher	Colne	72

Mrs CP Flack	Sussex	97
Mrs JM Fogerty	Dagenham	80
Mr DG Francis	Plymouth	95
Mr AWM Gair	Shetland	79
Mr LL Gallimore	Ashbourne	89
Mrs M Geogarty	Darwen	90
Mr P Glenaway	Bury St Edmunds	86
Mr R Goulden	Manchester	94
Mrs YP Greedy	Paignton	97
Mrs RA Grieveson	Co Durham	90
Mrs C Hackett	County Tyrone	82
Mrs MW Haig	Dumfries	87
Mrs WMR Hall	Warwickshire	82
Mr DJ Harrington	Newton Abbott	82
Mr RH Harris	Kent	78
Mr PA Hart	Hertfordshire	82
Mrs DP Heath	Dagenham	88
Mr R Hemming	Droitwich	80
Mrs MH Hewitt	Perth	87
Mr R Hickman	Fife	82
Mr WD Hitchings	Bristol	93
Mrs ED Houghton	Wokingham	90
Mr JW Huggett	Enfield	90
Mrs E Hughes	Ayrshire	85
Mrs M Isherwood	Cheshire	88
Mrs AJ Jackson	Birmingham	90
Mr TM Jenkin	Sidmouth	80
Mrs A Jones	Gwynedd	94
Mrs AL Jones	Peterborough	84
Mr AR Jones	Newbury	94
Mr BW Jones	Birmingham	93
Mr JIF Jones	Powys	98

Mrs K Jones	Sheffield	73
Mrs MJ Jones	Bridgwater	85
Mr R Kavanagh	Wisbech St Mary	78
Mr AA Kent	Burntwood	81
Mrs JE Kinder	Devizes	90
Mrs BR Knight	Manchester	92
Mr DE Knight	Hastings	79
Mr D Laud	Banbury	87
Mr R Lightfoot	Roxburghshire	76
Mr PD Limebear	St Albans	93
Mrs EA Link	Kidderminster	67
Mrs G List	London	90
Mr G Livingstone	Dalkeith	78
Mr RP Lowe	Blandford Forum	92
Mr J Mackenzie	Dundee	93
Mrs MP Maclaren	Kent	76
Mr M Mair	Cumnock	84
Mrs E Malyan	Sidcup	89
Mrs SJ Manley	Solihull	90
Mr FW Marshall	Bingham	89
Mrs C Mason	Preston	82
Mr LH Mason	Waltham Cross	85
Mrs AD Mcareavey	Radstock	79
Mr JA Mccloy	Bangor	93
Mrs M Mccourt	Crewe	86
Mrs JM Mckelvey	Nantwich	95
Mr I Mills	Shrewsbury	88
Mr R Mills	Manchester	85
Mr J Moran	Cheadle	95
Mrs MJ Morgan	Brackley	87
Mr DJ Morrison	Macclesfield	75
Mr JP Noble	Tyne And Wear	98

Mr RG Oxley	Norwich	97
Mrs E Pounder	Conwy	88
Mrs E Primrose	Glasgow	80
Mr LG Prosser	Port Talbot	77
Mrs M Rees	Doncaster	92
Mr K Rigg	Cleveland	73
Mrs M Roberts	Northampton	97
Mr DJ Roles	Treharris	83
Mrs JE Rollie	Ayr	90
Mrs DS Sacre	Bury St Edmunds	98
Mrs P Scott	Newcastle upon Tyne	75
Mr BJ Sheldon	Wigan	68
Mr AWF Simpson	London	93
Mr T Sinton	Australia	88
Mr PW Skillern	Peterborough	78
Mrs R Small	Newcastle upon Tyne	99
Mr D Smith	London	91
Mr DA Smith	Darlington	87
Mrs DL Smith	Bristol	80
Mr JD Smith	Ellesmere Port	86
Mr JF Smith	Addlestone	91
Mr MA Smith	Bicester	80
Mrs M Snaith	Whitley Bay	82
Mr DF Stamper	Glasgow	97
Mr RJ Swan	Dunfermline	68
Mrs B Swift	Eastbourne	92
Mrs CA Taylor	Newark	82
Mrs M Taylor	Leeds	86
Mrs IJM Tennant	Coventry	94
Mr BWN Tindall	Torquay	76
Mr PF Tomkin	Peterborough	88
Mrs AE Tomkins	Orpington	98

Mrs AM Tooley	Harrogate	91
Mr DJ Turner	Birmingham	84
Mr MJ Willis	Salisbury	76
Mr W Watson	Strathclyde	80
Mr JM Weller	Maidstone	87
Mrs VW Whymark	Brentwood	76
Mr MJ Winham	County Durham	78
Mrs JM Wood	Royston	85
Mrs A Wright	Leicestershire	83
Mrs B Young	Pontefract	80

LONDON LIFE

Name	Address	Age
Mrs JE Aitken	Romford	76
Ms KM Conaway	Surrey	73
Mrs SB Dow	West Sussex	87
Mrs BM Euesden	Essex	64
Mrs SM Hewson	Lincoln	77
Mr JM Parker	Bristol	80

NPI

Name	Address	Age
Mrs N Anslow	Kendal	85
Lord RTC Camoys	Henley On Thames	82
Mrs C Emanuel	Sittingbourne	80
Mr TE Farr	East Sussex	86
Mrs MB Milliken	Leominster	96
Mrs TJ Roker	Guildford	88
Mrs PJ Skelley	Sussex	91
Mr BW Smith	Lingfield	66
Mrs SA Streeton	Kent	66
Mrs K Wilson-Shepherd	Kent	82

Group contacts and events



A – Bishops Stortford

Group closed

B – Kent & South East

Mike Howlin – 07522 359437

The group's Christmas luncheon will be held at 12pm on 30 November at the 'Grasshopper on the Green', Westerham Village TN16 1AS. Contact Mike on the above number for further details. Partners and friends welcome.

D – Devon, Cornwall, Somerset

Mike Wall – 01395 274084

E – South Wales

Brian Jacob – 01559 395656

New members, please contact Brian by phone or email: brumajen@btinternet.com

F – Norfolk, Suffolk, Cambridgeshire

Ray Fradley – 01787 280043

Please contact Ray regarding any future events.

G – West Midlands

Geoff Barlow – 01922 477012

Group closed

L Division – Northern Ireland

Ross Hussey – 02882 244368

M & CC

Brian Mann – 07507957311

If you've not been to an M&CC event before and are not on the mailing list, please contact Brian.

N – Nottingham

Peter Norris – 0115 981 4347

Please contact Peter regarding any future events.

P - Bristol

Contact the editor in the first instance – details on the back page.

T – Yorkshire, Derbyshire, Nottinghamshire

Keith Smith – 0113 2812250

Group closed



V – North & Mid Wales, Shropshire, Chester
Wilf Beaumont – 01352 710848

Please contact Wilf regarding any future events, by phone or by email: johnbeaumont351@gmail.com

X - Northampton

Ray Williams – 01604 754139

NPI

Contact the editor in the first instance – details on the back page.

CROYDON

Malcolm Ash – 020 8642 4491 or
email: ashm@sky.com

LONDON LIFE

Chris Essex – 01225 873878

If anyone is not already in touch with me and would like an invite or information on future reunions, please phone or email: essexes@aol.com

Pearl Pensioners Club - Peterborough

Joy Wilson – 01733 244982

Email: justjoy293@gmail.com
Please check with the group which events are taking place.

Every Monday (2.00pm) – snooker at The Court, Bretton.

Monthly walk.

Music society – monthly meeting on a Friday.

Club meeting monthly in Alwalton Village Hall on the second Thursday, at 2.30pm.

Pearl Chief Office

Roger Jeary – 21 Ocean Wharf, 60 Westferry Road, London E14 8LN



Get in touch

If you have a general query about your pension, please contact the Scheme administrator in Peterborough.

Call us:

01733 447620

Email us:

pearl@firstactuarial.co.uk

Website:

www.pearlstaffpensionscheme.co.uk

Write to us:

First Actuarial LLP
First House
Minerva Business Park
Lynch Wood
Peterborough PE2 6FT

Need to update your details?

Please let us know if there are any changes to your personal details or address.

If you no longer wish to receive *Pension news* by post, please contact the Scheme administrator.

